



Twin lite

Blue & White

Flexion
The Microscope Family



The New Essential. Flexion Twin lite

Say hello to our newest member of the Flexion microscope family. Like its family members, the new Twin lite has been designed and developed through a **consistent focus on the needs of dentists**.

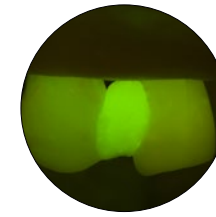
As with the Twin, there are two models to choose from: the **fluorescence Blue model** or the **light champion White**.

Both feature the all-important **Natural Light Filter**, which extends the preparation time for composite materials.

The Twin lite deliberately does without the extensive selective filter system including the polarizing filter of its big Twin brother making it an ideal tool **for general dentists and dental hygienists**.

Twin lite - The indispensable microscope for the modern dental practice.

Twin lite



Fluorescence Mode

Twin lite Blue - Visibility through Fluorescence

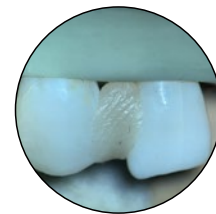
In addition to the white LED, the Flexion *twin lite* Blue is equipped with a second LED (dark blue), which improves the identification of restoration materials, tartar and caries. The UV light causes porphyrins inside the caries bacteria to fluorescence orange/red.



Boost Mode / 2 LEDs

Twin lite White - Light Boost with up to 200.000 Lux

The white version of the Flexion *twin lite* takes account of the wish of many dentists for a particularly well-lit treatment area by providing a second, white LED for additional luminosity. With the Twin White, the enormous power of up to 200.000 Lux of the two LED lights is visible. Both LEDs can be switched independently of one another to identify structures in the root canal.



Natural Light Filter

The Natural Light Filter extends the preparation time for composite materials. The rendering is closer to real warm light than an Orange Filter. Improved visibility for passages between hard and soft tissues.

Advanced Optical Design

CJ-Optik Flexion microscopes are highly acclaimed for their superior image quality. It is only through CJ-Optik working closely with the optics designer that the optimal specifications can be developed. With the use of apochromatic optics in the Twin lite microscopes dentists can detect the finest colour and structure details.



Perfect Illumination

The fanless LED spot lighting provides a well-lit treatment area with high colour rendering index and 5.500 K. Future-proof with 65,000 hours lifespan. The spot diaphragm always shows the assistant the exact treatment site and prevents light from falling into the patient's eyes.



Twin lite

A class of its own.

The name "Twin" indicates that both models are equipped with two LED light sources. While the Twin lite Blue uses its fluorescent light to represent the normally invisible boundaries and transitions between tooth material and fillings, the Twin lite White has the full power of two LEDs that penetrate even into the deepest root canals.

Bigger Lens System
The larger the lenses and the better their coatings, the brighter and sharper the image

Large Exit Pupil
For wearers of glasses

IPD Adjuster
Single-handed, wide adjustment range from 55 - 75 mm

SensorUnit
Controls photo or video recordings easily with a hand gesture. Including the **display for the LEDs** and the **Natural Light Filter**



White Light Mode Fluorescence Mode or Light Boost Mode



Natural Light Filter

Light intensity control
When pressed, each brightness setting can individually be stored

Superior Light Transmission
Throughput for optimal viewing and documentation

VarioFocus³
More working distance for added comfort & more ergonomic positioning

Magnification
5-step full apochromatic magnification changer

MonoGlobe
The weightless movement balancing system for an ergonomic working position

Ergotube 30°
With binocular inclination 0-200°

4K, HD & Phone Imaging Ports
Optimized for the newest digital cameras (APS-C and FullFrame). Continuous power to all Sony Alpha cameras

Fluorescence Mode
(Twin lite Blue) or
Boost Mode
(Twin lite White)

Iris Diaphragm
For rear LED



Technical Data

Flexion^{twin lite} Blue & White

| | | |
|----------------------|--|---|
| Magnification System | 5-step apochromatic magnification changer / 0.4 - 2.5 | |
| Eyepieces | Widefield eyepieces WF 12.5 x Widefield eyepieces WF 12.5 x / Reticle * | |
| Tube System | F = 170 mm apochromatic / 180° tiltable tube F = 200 mm * | |
| Stereo Base | 24 mm for enhanced 3D vision | |
| Focus System | VarioFocus ² 200 - 350 mm / Plan-APO / glass protection * VarioFocus ³ 210 - 470 mm / Plan-APO / glass protection * VarioFocus with hydrophobic glass protection * | |
| Illumination System | Twin lite Blue: Up to 100.000 Lux (<i>white rear LED</i>) Fluorescence (<i>dark blue front LED</i>) Twin lite White: Up to 200.000 Lux (<i>white front and rear LEDs</i>) Fanless high power LED 5.500 K / 65.000 h life time 2° with stepless spot diaphragm system (<i>for rear LED</i>) | |
| Filter | Natural Light Filter LED control display | |
| Movement | MonoGlobe, 355° Axis control | |
| Handles | Ergonomic handles, 360° adjustable | |
| Asepsis | 1 x Asepsis set for the handles and knobs (<i>sterilizable</i>) | |
| Documentation | Integrated beam splitter 50:50 4K-Imaging-Port / FullFrame * HD-Imaging-Port / APS-C * Phone-Imaging-Port / Smartphones * | SensorUnit for touchless photo / video MicVision App (<i>iOS and Android</i>) * MicroVis Software * |
| Power | Power adapter for all Sony Alpha cameras, smartphones | |
| Stands | Mobile stand *, Wall mount *, Ceiling mount *, Floor mount *, Dental unit * | |

* optional

CJ-Optik GmbH & Co. KG

Willeckstrasse 1
35614 Asslar-Werdorf
Germany

Phone: +49 (0) 64 43 - 81 81 33 0

Fax: +49 (0) 64 43 - 81 81 33 9

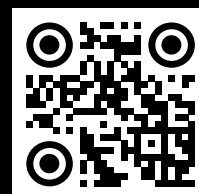
info@cj-optik.de
www.cj-optik.de



cjoptik



cjoptik



Scan the QR code
to visit us online.

