

STATMATIC™



STATMATIC
S30000

ULTIMATE CARE SYSTEM for 3 handpieces and their Chuck Mechanisms

STATMATIC is the automatic care and maintenance system that properly, lubricates, and purges up to 3 handpieces prior to sterilisation. STATMATIC also incorporates a unique chuck maintenance to dislodge debris inside the chuck. You and your staff will profit from greater efficiency, fewer repairs, and extended durability of your handpieces.



Extends the Life of your Handpieces

It properly, lubricates, and purges your handpieces to increase their working lifetime.



Optimizes Staff Productivity

Its automated process optimizes working procedures in your practice, allowing staff to focus on alternative tasks.



Time-Saving

Up to 3 handpieces can be lubricated, and purged in less than 2 minutes.



SciCan

www.scican.com

Improved working life of your handpieces

through efficient purging and lubrication – saving you time and money.



STATMATIC is the automatic care and maintenance system for up to 3 instruments of your choice, plus their chuck mechanisms. STATMATIC optimizes working procedures in your practice and plays an important part in protecting and maintaining your valuable instruments.

One, Two or Three. STATMATIC works it out.



Quick and Thorough

- Automatically purges and maintains up to three handpieces.
- Cycle time is only 30 seconds per handpiece.
- Unique chuck care system.
- Optimal lubricant coverage throughout the handpiece.
- Compressed-air connection: Excess lubricant purging.
- Automated reproducible quality of care.
- Easy spray can insertion.
- Can coupling with unique safety valve.
- Absorption pad for excess lubricant.
- 3 years guarantee – only from SciCan.



Changing the can
It's really as easy as can be: push up the retaining ring, snap the spray can into place and let the retaining ring back down again.

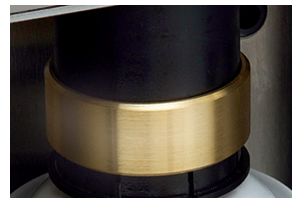
Prod. no. STM500-EU



Changing the Absorption Pad

Clean as a whistle: STATMATIC is fitted with an absorption pad to retain any excess lubricant.

Prod. no. S30102



Safety Value

Absolutely safe: the automatic safety valve will only open when a care programme has been activated.



Chuck care: CM CARE

Put the chuck in position, press the button, done!

Specifications

Dimensions (W x D x H)	Weight	Electrical ratings	Protection class	Ambient temperature	Sound level	Relative humidity	Compressed air	Air consumption	Compressed-air quality	Cycle time
285 x 190 x 400 mm (11.4 x 7.6 x 16 inches)	8.6 kg 18.9 lbs	Rated voltage: 100-230 V Rated frequency: 50/60 Hz Rated power: max. 30 VA	1	5-40° C (41-104 °F)	60 (65) dB (A)	max. 85 %	4-6 bar (58-87 psi)	40 NL/min	Residual oil content: max. 0,1 mg/m ³ Residual dust: max 1µ; max. 1 mg/m ³ Residual water: max. 0.1 g/m ³ at -40 °C	Pre-purging time 15 seconds (standard) plus lubrication time, which can be set from 15, 20, 30 and 40 seconds

Manufactured for:
SciCan Ltd.
1440 Don Mills Road,
Toronto, ON M3B 3P9
Tel.: (416) 445-1600
Fax: (416) 445-2727
Toll Free: 1-800-667-7733
customerservice@scican.com



EU Representative:
SciCan GmbH
Wangener Strasse 78
88299 Leutkirch
Deutschland
Tel.: +49 (0)7561 98343 - 0
Fax: +49 (0)7561 98343 - 699
customerservice_eu@scican.com

Swiss Customers:
SciCan Medtech AG
Alpenstrasse 14
6300 Zug
Schweiz
Tel.: +41 (0) 41-727 7027
Fax: +41 (0) 41-727 7029 Office for
Swiss Customers:

3 YEAR GUARANTEE:

Highest quality stainless steel design, long working life – you can rely on STATMATIC. Quality – Made in Germany.

SciCan

www.scican.com